

Library & Educational Services Newsletter

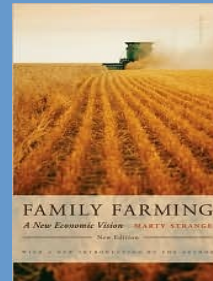
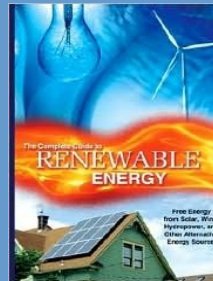
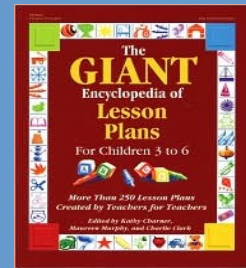
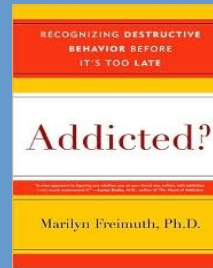
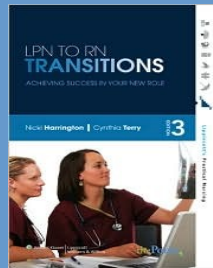
JANUARY 2009

Check out our website: lakeareatech.edu/libraryweb

Did you know?

- You can access millions of **journal, magazine, and newspaper articles online** through the library's electronic databases.
- You can access thousands of **electronic books** through the NetLibrary and Gale Virtual Reference databases.
- You can access **current information about disorders, diseases, and drugs** through the Micromedex database.

NEW BOOKS!

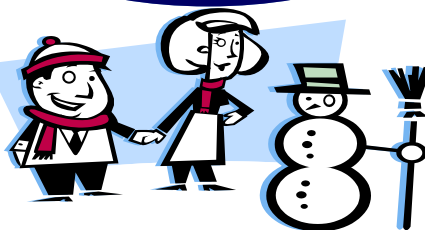


EDUCATIONAL SERVICES CENTER

Library Hours:
M-Th- 7:30-9
F- 7:30-4

Time Management Suggestions

The most successful system for most students is to combine long-range and short-range planning.



Plan enough time for study. Schedule two hours of study time for each hour of class time per week.

Space study periods. Each hour of study should be followed by a 15 minute break.

Ed. Services Provides:

- One-on-one tutoring
 - Peer tutoring
 - Entrance and Placement Testing
 - Make-up Testing

Study at the same time every day. Having a routine will help you stay focused.

Plan for daily reviews. Plan short periods of study time for each class each day.

Make use of free hours during school. Don't waste this precious study time.

Leave some unscheduled time for flexibility. Lack of flexibility is the major reason schedules fail!