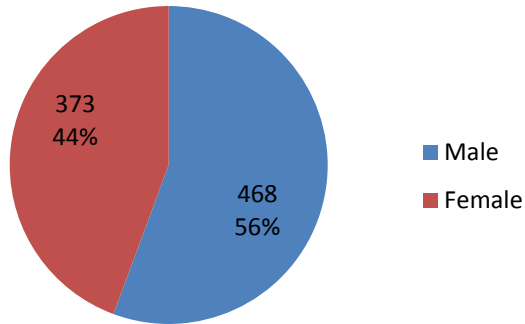


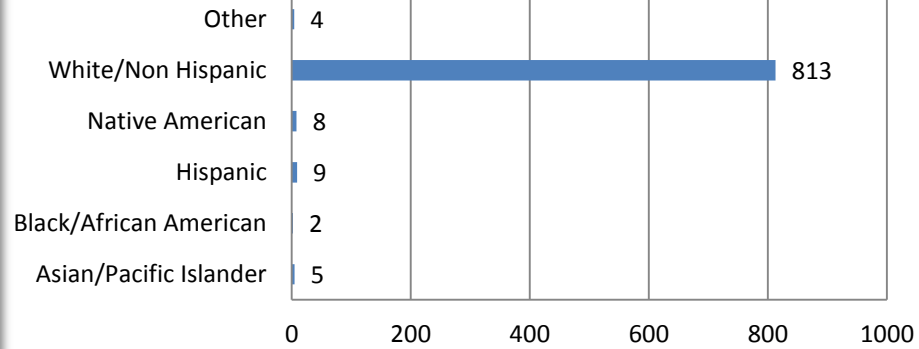
LATI Student Survey Results - Spring 2010

Number of Students Participating - 841

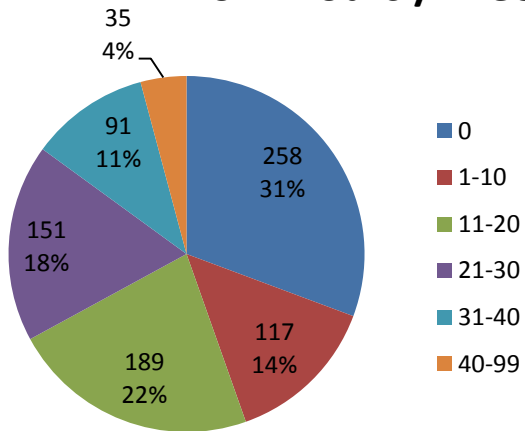
Gender Info



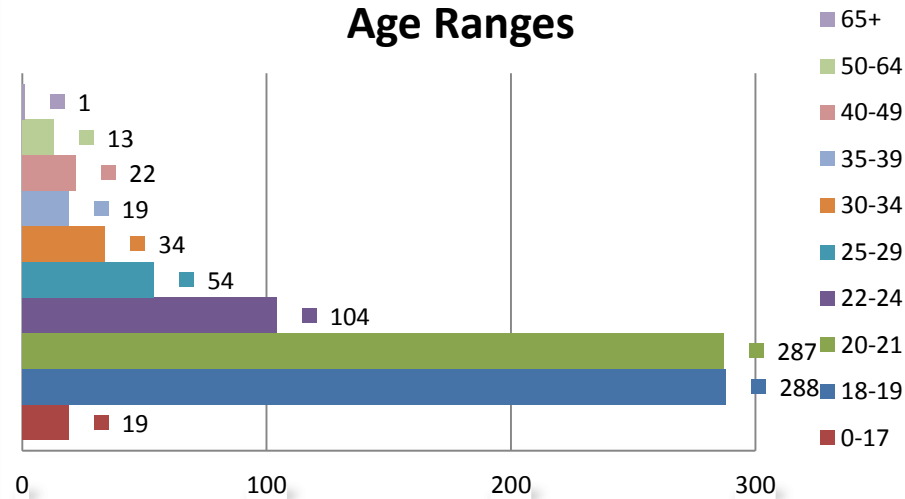
Ethnic Info



Work Hours / Week

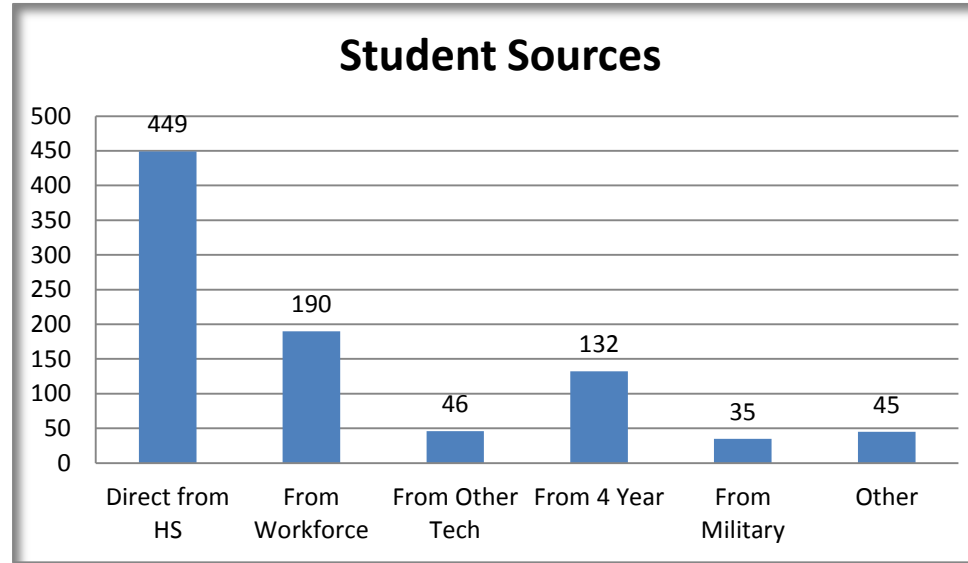
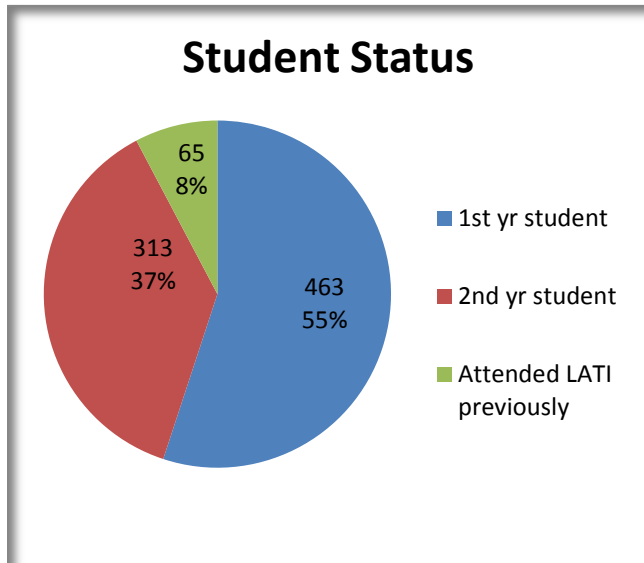


Age Ranges



LATI Student Survey Results - Spring 2010

Number of Students Participating - 841



1-Strongly agree, 2-agree, 3-Disagree, 4-Strongly disagree

1. LATI campus is modern and technically up to date.	Responses-792	Avg-1.86
2. The coursework provides me with the skills and knowledge I will need to pursue a career.	Responses-778	Avg-1.71
3. I will recommend LATI to others because of my experience.	Responses-781	Avg-1.69
4. Admissions procedures are clear and understandable. (1st yr only)	Responses-436	Avg-1.79
5. LATI kept me informed during my admission process. (1st yr only)	Responses-434	Avg-1.74
6. The admissions staff is helpful and informative. (1st yr only)	Responses-433	Avg-1.64
7. Admissions staff responds to inquiries in a correct and timely manner. (1st yr only)	Responses-430	Avg-1.69
8. LATI kept me informed during my registration process.	Responses-787	Avg-1.70
9. Class registration and changes are easy to complete.	Responses-768	Avg-1.64

LATI Student Survey Results - Spring 2010

Number of Students Participating - 841

10. My class schedule has sufficient information to plan my semester.	Responses-788	Avg-1.69
11. The registration staff is helpful and informative.	Responses-775	Avg-1.63
12. The registration staff is available at convenient times.	Responses-777	Avg-1.71
13. Grade reports, schedules, course offerings, etc are easily accessible.	Responses-781	Avg-1.67
14. LATI kept me informed during my financial aid process.	Responses-721	Avg-1.74
15. The financial aid staff helped me complete necessary transactions.	Responses-711	Avg-1.63
16. The financial aid staff is helpful and informative.	Responses-713	Avg-1.62
17. The financial aid staff is available at convenient times.	Responses-716	Avg-1.67
18. Campus facilities are accessible.	Responses-799	Avg-1.65
19. The campus is organized so that it is easy to find rooms or services.	Responses-794	Avg-1.71
20. The campus has enough places to meet and study with other students.	Responses-771	Avg-1.76
21. Parking areas have adequate lighting.	Responses-740	Avg-1.93
22. Classrooms have adequate lighting.	Responses-779	Avg-1.62
23. LATI provides a safe environment.	Responses-785	Avg-1.56
24. Classrooms, hallways and restrooms are clean and well-maintained.	Responses-792	Avg-1.60
25. Custodial personnel are helpful and courteous.	Responses-729	Avg-1.62
26. The campus has adequate parking.	Responses-738	Avg-2.76
27. Classrooms have adequate seating.	Responses-781	Avg-1.73

LATI Student Survey Results - Spring 2010

Number of Students Participating - 841

28. LATI is open to and welcomes cultural diversity.	Responses-762	Avg-1.58
29. The Student Senate is valuable.	Responses-738	Avg-1.84
30. Medical facilities are adequate at LATI.	Responses-0	Avg-0.00
31. Professional counselors are available and meet my needs.	Responses-670	Avg-1.78
32. The tuition collection and billing process is well-organized and clear.	Responses-784	Avg-1.69
33. The Career Center representative on campus is helpful with employment information.	Responses-634	Avg-1.77
34. Attendance policies in my program are clear and consistent.	Responses-795	Avg-1.72
35. Attendance policies for general education courses are clear and consistent.	Responses-767	Avg-1.63
36. The program instructors are interested in and enthusiastic about teaching.	Responses-801	Avg-1.63
37. The course sequence in my program is well-organized.	Responses-804	Avg-1.70
38. Grading and testing is fair and consistent.	Responses-804	Avg-1.76
39. Instructors are approachable, helpful and supportive.	Responses-797	Avg-1.61
40. Information concerning courses, requirements and education plans is provided.	Responses-798	Avg-1.62
41. Information regarding grades and attendance is provided.	Responses-801	Avg-1.59
42. LATI taught me social and personal responsibility.	Responses-764	Avg-1.78
43. LATI taught me how to set goals and achieve desired outcomes.	Responses-769	Avg-1.77
44. LATI improved my interpersonal and public communication skills.	Responses-769	Avg-1.76
45. LATI provided me the knowledge I need to start a career in my field of study.	Responses-785	Avg-1.63

LATI Student Survey Results - Spring 2010

Number of Students Participating - 841

46. The ESC/library staff is helpful and courteous.	Responses-678	Avg-1.66
47. The ESC/library hours are convenient.	Responses-660	Avg-1.63
48. The facility is adequate for quiet study and testing.	Responses-686	Avg-1.62
49. I am aware that tutors or peer tutors are available to assist students.	Responses-685	Avg-1.66
50. Tutors or peer tutors provide a valuable service.	Responses-611	Avg-1.64
51. The library has resources that are current and useful in preparing reports/projects.	Responses-633	Avg-1.67
52. The library has an adequate number of computers for student use.	Responses-664	Avg-1.77
53. The ESC provides good information and assistance in regard to writing skills.	Responses-616	Avg-1.69
54. The bookstore staff is helpful and courteous.	Responses-797	Avg-1.60
55. The bookstore has required materials available.	Responses-797	Avg-1.65
56. The bookstore has convenient hours.	Responses-789	Avg-1.54
57. The bookstore's clothing selection is adequate.	Responses-762	Avg-1.64
58. Food service facilities are clean and pleasant.	Responses-753	Avg-1.53
59. The food service staff is courteous and helpful.	Responses-748	Avg-1.48
60. The food service hours are convenient.	Responses-758	Avg-1.59
61. Food service offers quality food.	Responses-755	Avg-1.66
62. An adequate selection of menu items is available.	Responses-755	Avg-1.65
63. Food service prices are fair.	Responses-755	Avg-1.79

LATI Student Survey Results - Spring 2010

Number of Students Participating - 841

64. Computer labs are open when needed.	Responses-667	Avg-1.67
65. Computer labs have current equipment and materials.	Responses-676	Avg-1.63
66. Computer labs are staffed by knowledgeable personnel.	Responses-652	Avg-1.64
67. Laptop support meets my needs.	Responses-628	Avg-1.69
68. Network services (e-mail, wireless connectivity, etc) meet my needs.	Responses-740	Avg-1.60
69. The laptop lease to own program is beneficial to me.	Responses-563	Avg-1.80
70. The Watertown Community Recreation Center meets my needs.	Responses-651	Avg-1.65
71. Student organizations provide opportunities for learning and involvement.	Responses-624	Avg-1.67
72. The Campus Activity Board (CAB) meets my athletic and social needs.	Responses-593	Avg-1.68